

# EPI- European Pact for Integration

## Challenges and Solutions for Cities design

## Integration Policies and Strategies

### WHAT IS HAPPENING?

#### EPI Integration Strategies

We entered the last phase of the project, where the EPI cities are testing the pilot actions as a preliminary step for formalizing their own integration strategies. At city level, each EPI city is setting the steps to be taken to create and sign an official City Integration Strategy to be supported by the city government, either through the formalization of a policy process that will set its implementation or through the direct deployment of follow-up actions and initiatives.

At project level, partners are also developing a common framework with all the strategies implemented so far. This will include general guidelines, best practices, case studies and specific activities undertaken by each EPI city, so that other EU cities and stakeholders can have access to this knowledge and improve their own policies and measures.

#### Transnational Meeting

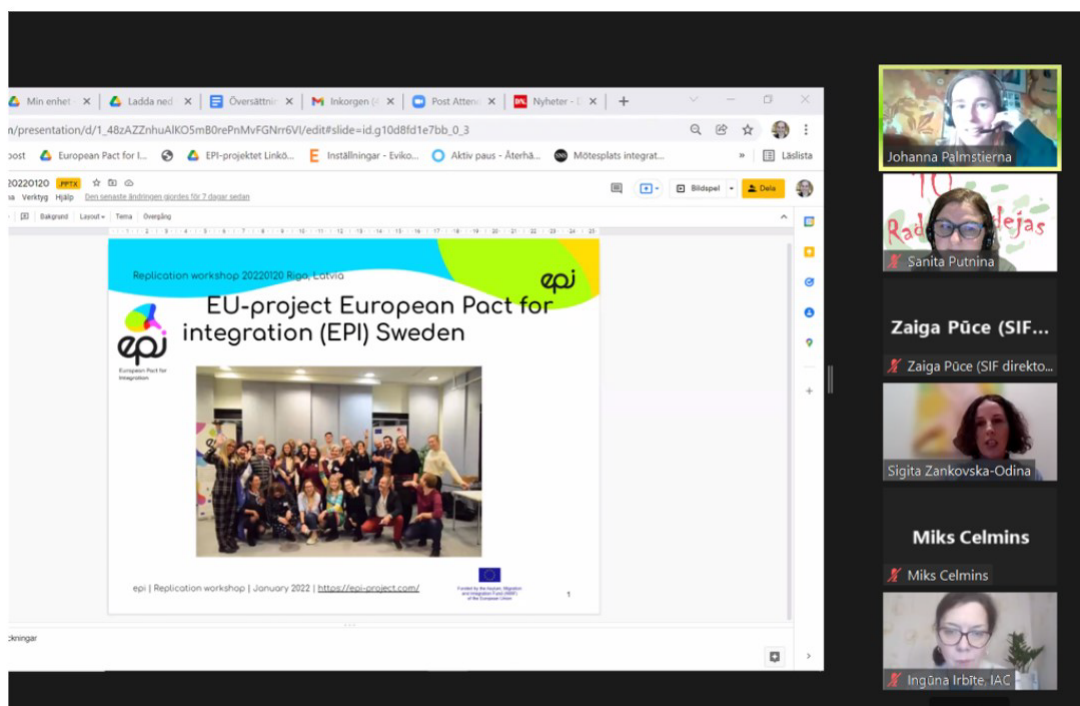
Partners will meet in Cartagena, Spain, on March the 31st and April the 1st. This meeting will be aimed to share the results of the pilot actions and all raising awareness activities organised by the different EPI partners, such as the replication workshops, and plan the next step, such as the organisation of National Conferences and the delivery of the European Final Conference (foreseen on May the 30th and the 31st in Monza, Italy).

#### Replication Workshops

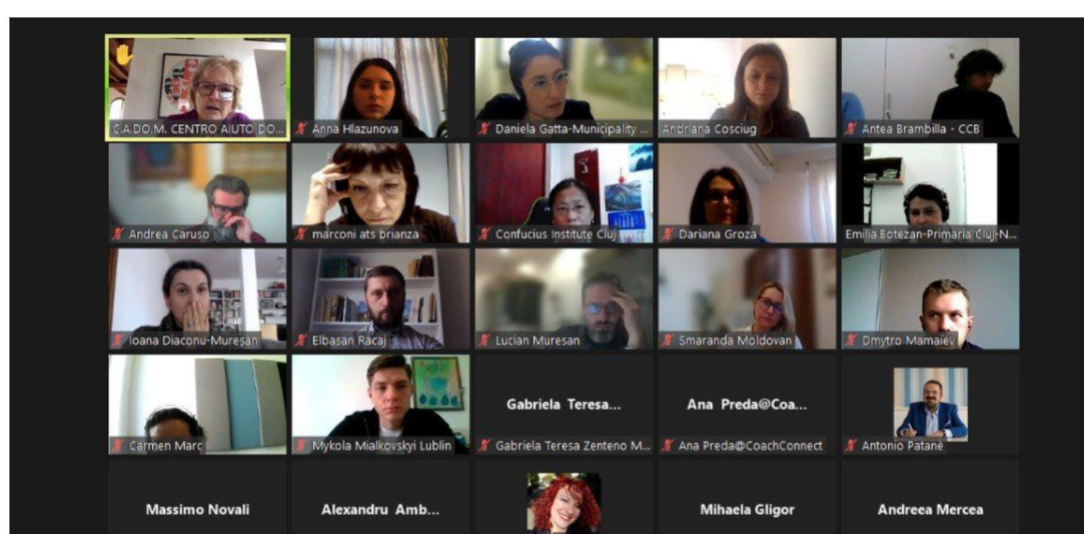
Building on the EPI cities activities and more specifically on the City Integration Strategies, EPI is organising replication workshops aimed to broaden and spread the experience gained and lessons learned during the EPI project to other cities (follower cities), easing and enabling them to implement similar inclusion and integration city initiatives successfully while adapting it to their contexts.

Here an update regarding the online workshops

| Who                  | When       | What   |
|----------------------|------------|--|
| Riga, Creative Ideas | 20/01/2022 | Excellent opportunity to exchange experience and share lessons learned in the EPI project on a European and local scale. The event had 43 participants, representing Latvian municipalities, public institutions and NGOs. |



| Who                                | When       | What  |
|------------------------------------|------------|---|
| Cluj, Lublin, Ravenna, Patrir, CCB | 10/02/2022 | Highlight and disseminate the best actions taken by Cluj, Lublin and Ravenna aimed to facilitate and support the integration of citizens coming from outside the European Union; official presentation of the EPI virtual library, summing up all practices developed by the EPI cities |



| Who                                | When       | What  |
|------------------------------------|------------|---|
| Cartagena, ACI                     | 23/02/2022 | The diversity management experience in Cartagena with the intervention of various speakers on the context of interculturality with innovative experiences such as: initiatives on religious diversity management and educational workshops delivered in the schools   |
| Dietzenbach, Linköping, Pro Arbeit | 28/02/2022 | During the event, representatives of the Cities of Linköping and Dietzenbach will present the main actions and achievements in terms of integrating international citizens. They will start from the <a href="#">Council of Europe's Intercultural Cities Index</a> and continue with sessions where all participants will share their experiences and best practices |

#### Resources

##### The last bulletin of European Migration Network

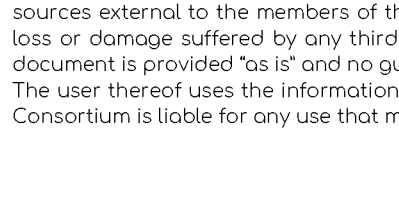
EMN Bulletins are quarterly newsletters which provide an update on recent EU and national developments on migration and asylum as well as an overview of key statistics, EMN publications, events and developments.

[Click here to download the Bulletin](#)

[Click here to download the Bulletin Flash](#)

This project has received funding from the European AMIF programme under grant agreement N° 863614. This document reflects only the authors' view and not those of the European Community. This work may rely on data from sources external to the members of the EPI project Consortium. Members of the Consortium do not accept liability for loss or damage suffered by any third party as a result of errors or inaccuracies in such data. The information in this document is provided "as is" and no guarantee or warranty is given that the information is fit for any particular purpose. The user thereof uses the information at its sole risk and neither the European Community nor any member of the EPI Consortium is liable for any use that may be made of the information.

Funded by the Asylum, Migration and Integration Fund (AMIF) of the European Union



www.epi-project.com  
hello@epi-project.com

#### Project Partners:

