

Intercultural City (ICC) Index

It is developed by the Intercultural Cities Programme of the Council of Europe.

Through a series of strong indicators, it assesses the level of intercultural integration of a city, showing where the city stands in the different governance/policy areas that foster intercultural integration and in which areas efforts should be concentrated in the future.

EPI ICC REVIEW PROCESS

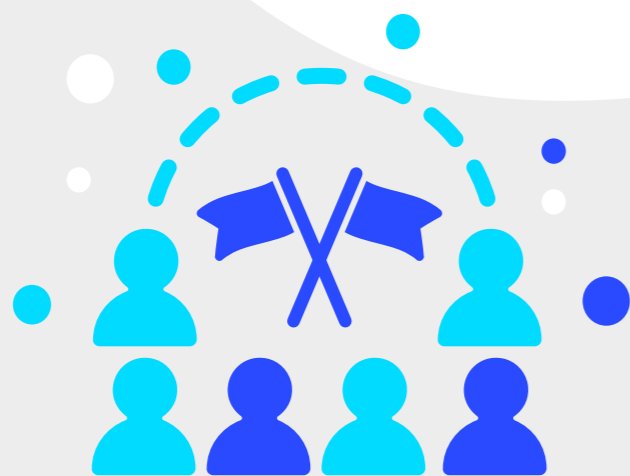
The intercultural city citizens are people of different nationality, origin, language and/or belief. The city actively combats discrimination and adapts its governance, institutions and services to the needs of a diverse population in order to deal with cultural conflicts and enhance public participation.

STEP 1

CAPACITY BUILDING



where:
Cluj-Napoca



who:
7 EU Cities and
6 Technical Partners

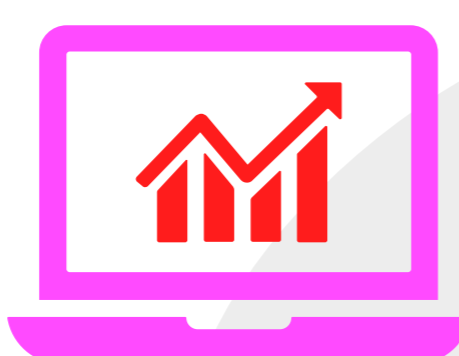


what:
2 day workshop on how to use the ICC and how to complement its results with qualitative data

STEP 2

INTERCULTURAL CITY INDEX REVIEW

Data collection via questionnaire and assessment



DESK RESEARCH AND ANALYSIS

The cities provide a first answer to the questionnaire and researches on integration and intercultural policies at local and national level.

STAKEHOLDERS' ENGAGEMENT

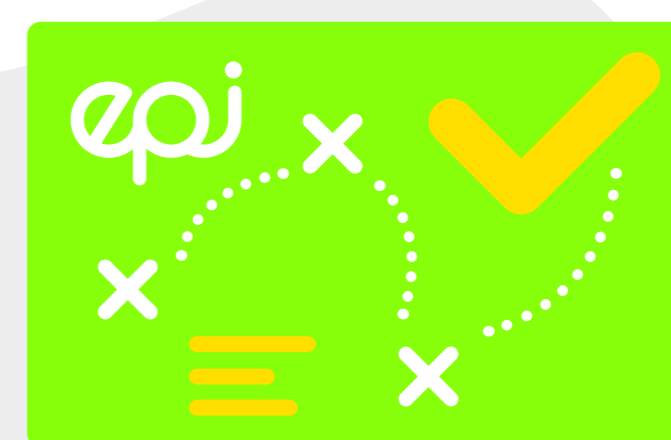
The cities engage public and private organisations through interviews and Focus Groups to validate ICC Index results and delve into the areas the cities will focus their strategies on.

STEP 3

PEER REVIEW MEETING



Questionnaires data are verified by Council of Europe's experts in order to evaluate the results of the review process and to identify common trends between the cities.



Delivery of a report on the assessment

...WHAT'S NEXT?